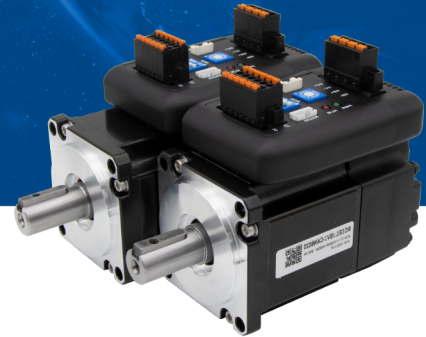


iSV2 Series Integrated Servo Motor

All-in-1 General Purpose



iSV2 series Product Introduction

iSV2 Series Integrated Servo Motor supports Modbus RTU and CANopen protocol (CiA301 & 402 standard protocol) in addition to pulse and directional control. Our integrated servo motor is aimed to save installation wiring work and application where mounting space is very limited.

iSV2 series is available with 200W, 400, 750W models of different flange sizes (60,80,57,86mm). Motor torque ranges from 0.64Nm up to 2.39Nm (Peak:7.2Nm) and torque overload of 250% to 300% for 3s. All comes with 17-bit magnetic encoder for more precise positioning control.



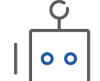
AGV



CNC Carving



3D printing



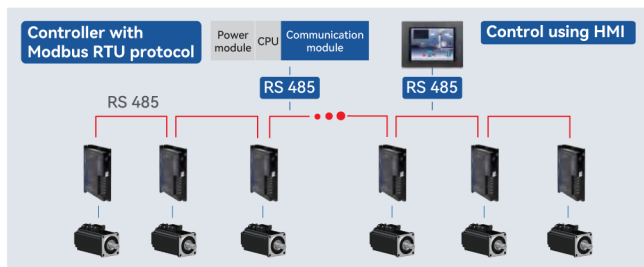
Robots



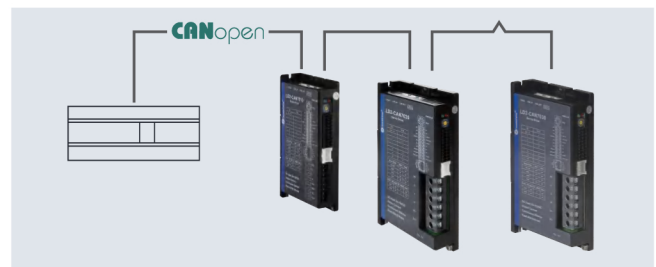
Medical

Integrated Servo Motor Features

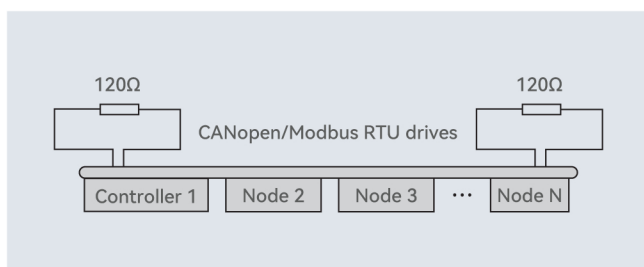
- Modbus RTU communication protocol with RS485 networking communication.



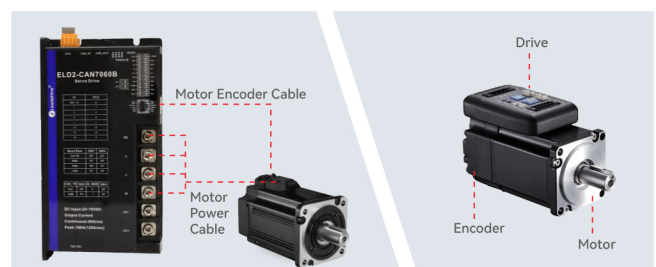
- CANopen communication protocol with PDO settings for easier drive setup and 402 observer for drive data monitoring and tuning.



- Integrated terminal resistor which can adjusted using switch on the drive.



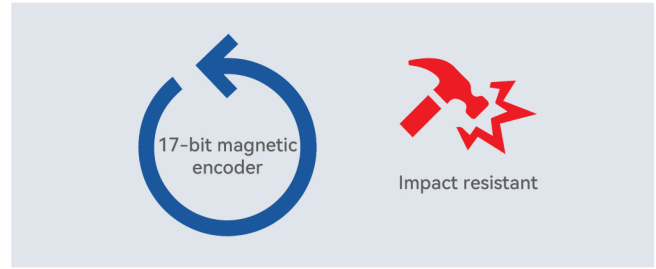
- Save installation space and installation wiring work.



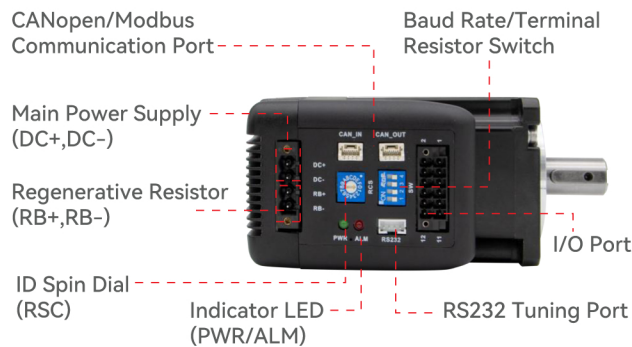
- Cooling vent on the back cover of the motor to ensure optimal continuous motor performance.



- 17-bit magnetic encoder for precise positioning and stable operation in harsher environment.



Ports & Connectors



iSV2 - CAN 60 40 V48 G

Motor Series	
iSV2	iSV2 Series Integrated Servo Motor

Communication Protocol	
RS	Modbus RTU / Pulse+Direction
CAN	CANopen

Motor Flange Size	
57	57mm
60	60mm
80	80mm
86	86mm

Motor Brake	
H	Without Brake
G	With Brake

Rated Voltage	
24	24VDC
48	48VDC

Rated Power	
20	200W
40	400W
75	750W

Specifications

Motor	Flange size (mm)	Voltage (V)	Rated Power (W)	Current (Arms)		Torque (Nm)		Rotational speed (rpm)	
				Rated	Peak	Rated	Peak	Rated	Peak
iSV2-*6020V24	60	VDC24-60	200	11	34	0.64	1.92	3000	4000
iSV2-*6020V48				6.5	20				
iSV2-*6040V48			400	10	28				
iSV2-*8075V48	80		750	19	57	2.4	7.2		
iSV2-RS5740V48H	57		400	10	28	1.27	3.81		
iSV2-RS8675V48H	86		750	19	57	2.4	7.2		