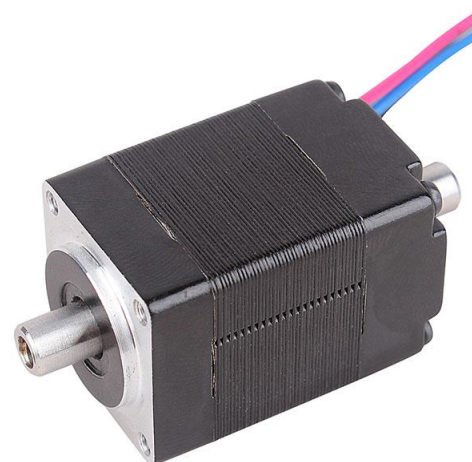


1.8° NEMA8 (20mm) High-torque Hybrid Stepper Motor

Item	Specifications
Step Angle	1.8°
Step Angle Accuracy	±5% (full step, no load)
Resistance Accuracy	±10% (@20°C)
Inductance Accuracy	±20% (1kHz)
Ambient Temperature	-20°C to +50°C
Temperature Rise	80°C Max. (rated current, 2 phase on)
Insulation Resistance	100MΩMin. ,500VDC
Dielectric Strength	500VAC for 1 min.
Shaft Radial Play	0.02Max. (450 g-load)
Shaft Axial Play	0.08Max. (450 g-load)
Max. radial force	10N (20mm from the flange)
Max. axial force	4N

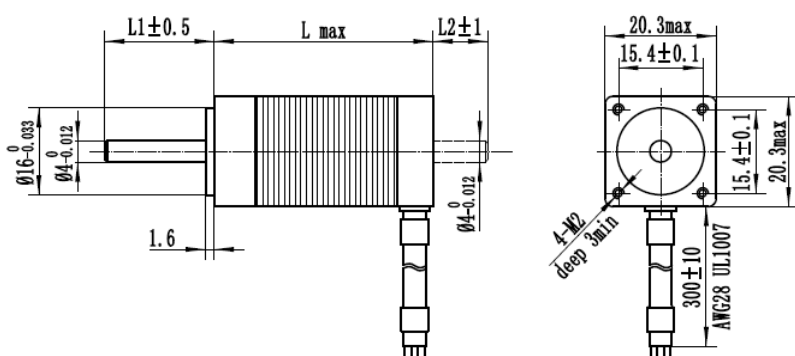


This motor can be customised upon request

● Motor Specifications

Model No.	Step Angle (°)	Rated Voltage (V)	Rated Current (A)	Phase Resistance (Ω)	Phase Inductance (mH)	Holding Torque (g.cm)	Rotor Inertia (g.cm ²)	Motor Length (mm)	Leads No.	Motor Weight (g)
M20STH28-0204	1.8	4.6	0.2	23	8.2	140	2.5	28	4	50
M20STH30-0506	1.8	5.75	0.5	11.5	1.7	180	2.8	30	6	60
M20STH33-0604	1.8	3.9	0.6	4.5	1.6	180	3.2	33	4	70
M20STH38-0604	1.8	6	0.6	10	5.5	260	3.6	38	4	80
M20STH42-0804	1.8	1.2	0.8	1.5	5.4	300	4	42	4	90

● Dimension



Notes: Motor has single or double output shaft versions. L1 & L2 can be customised accordingly to the customer's requirements. MOQ may apply.

● Connection Diagram

