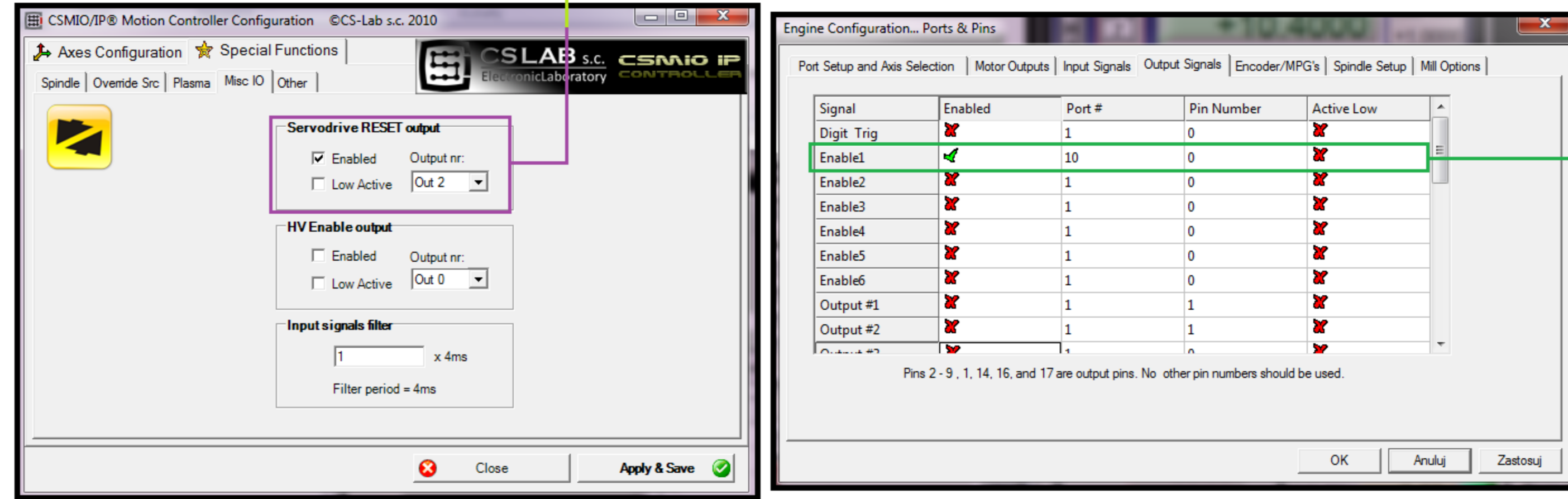


Engine Configuration... Ports & Pins

Signal	Enabled	Port #	Pin Number	Active Low	Emulated	HotKey
Input #3	<input checked="" type="checkbox"/>	1	0	<input checked="" type="checkbox"/>	<input checked="" type="checkbox"/>	0
Input #4	<input checked="" type="checkbox"/>	1	0	<input checked="" type="checkbox"/>	<input checked="" type="checkbox"/>	0
Probe	<input checked="" type="checkbox"/>	0	0	<input checked="" type="checkbox"/>	<input checked="" type="checkbox"/>	0
Index	<input checked="" type="checkbox"/>	0	0	<input checked="" type="checkbox"/>	<input checked="" type="checkbox"/>	0
Limit Cvd	<input checked="" type="checkbox"/>	0	0	<input checked="" type="checkbox"/>	<input checked="" type="checkbox"/>	0
Estop	<input checked="" type="checkbox"/>	10	0	<input checked="" type="checkbox"/>	<input checked="" type="checkbox"/>	0
THC On	<input checked="" type="checkbox"/>	0	0	<input checked="" type="checkbox"/>	<input checked="" type="checkbox"/>	0
THC Up	<input checked="" type="checkbox"/>	0	0	<input checked="" type="checkbox"/>	<input checked="" type="checkbox"/>	0
THC Down	<input checked="" type="checkbox"/>	0	0	<input checked="" type="checkbox"/>	<input checked="" type="checkbox"/>	0

Pin 10-13 and 15 are inputs. Only these 5 pin numbers may be used on this screen.



Encoder inputs connector (0 / 1 / 2)

PIN number	Description
1	Enc. CH0 A+
2	Enc. CH0 B+
3	Enc. CH0 H+
4	+5V
5	Enc. CH1 A+
6	Enc. CH1 B+
7	Enc. CH1 H+
8	+5V
9	Enc. CH2 A+
10	Enc. CH2 B+
11	Enc. CH2 H+
12	+5V
13	GND
14	Enc. CH0 A-
15	Enc. CH0 B-
16	Enc. CH0 L-
17	GND
18	Enc. CH1 A-
19	Enc. CH1 B-
20	Enc. CH1 L-
21	GND
22	Enc. CH2 A-
23	Enc. CH2 B-
24	Enc. CH2 L-
25	GND

Digital inputs connector (0-11)

PIN number	Description
1	Input 0 (+)
2	Input 1 (+)
3	Input 2 (+)
4	Input 3 (+)
5	Input 4 (+)
6	Input 5 (+)
7	Input 6 (+)
8	Input 7 (+)
9	Input 8 (+)
10	Input 9 (+)
11	Input 10 (+)
12	Input 11 (+)
13	Not used (GND)
14	Input 0 (-)
15	Input 1 (-)
16	Input 2 (-)
17	Input 3 (-)
18	Input 4 (-)
19	Input 5 (-)
20	Input 6 (-)
21	Input 7 (-)
22	Input 8 (-)
23	Input 9 (-)
24	Input 10 (-)
25	Input 11 (-)

Digital outputs connector (0-15)

PIN number	Details
1	24V power supply for 0-3 outputs
2	Output 0
3	Output 2
4	24V power supply for 4-7 outputs
5	Output 4
6	Output 6
7	24V power supply for 8-11 outputs
8	Output 8
9	Output 10
10	24V power supply for 12-15 outputs
11	Output 12
12	Output 14
13	GND (not in use)
14	Power supply 0V for 0-3 outputs
15	Output 1
16	Output 3
17	Power supply 0V for 4-7 outputs
18	Output 5
19	Output 7
20	Power supply 0V for 8-11 outputs
21	Output 9
22	Output 11
23	Power supply 0V for 12-15 outputs
24	Output 13
25	Output 15

Analog inputs/outputs connector

PIN number	Description
1	Analog output CH0 (V<sub>I</sub>=10V)
2	Analog output CH1 (V<sub>I</sub>=10V)
3	Analog output CH2 (V<sub>I</sub>=10V)
4	Analog output CH3 (V<sub>I</sub>=10V)
5	Analog output CH4 (V<sub>I</sub>=10V)
6	Analog output CH5 (V<sub>I</sub>=10V)
7	Analog output 0 (0-10V)
8	Analog output 1 (0-10V)
9	Analog input 0
10	Analog input 1
11	Analog input 2
12	Analog input 3
13	10V (max. 50mA)
14	GNDCH0
15	GNDCH1
16	GNDCH2
17	GNDCH3
18	GNDCH4
19	GNDCH5
20	GND
21	GND
22	GND
23	GND
24	GND
25	GND

Power connector

PIN number	Description
1	Power=24V DC
2	GND
3	ground

**CSMIO/IP-A**

