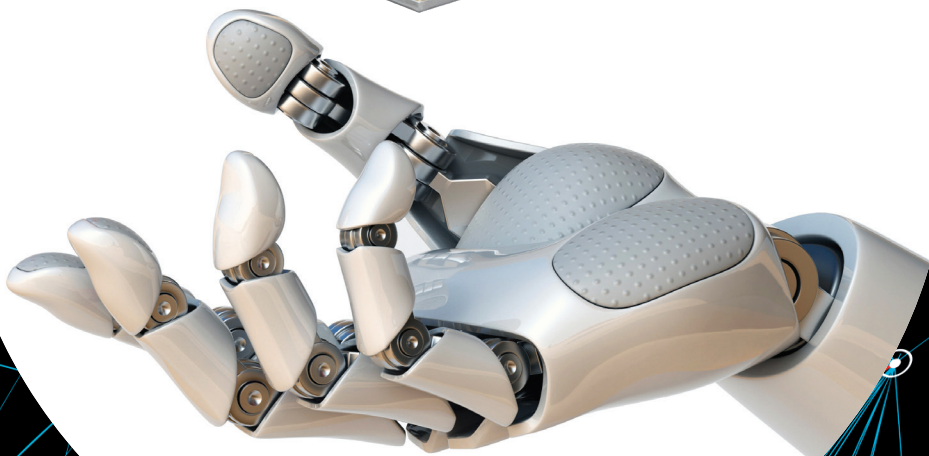
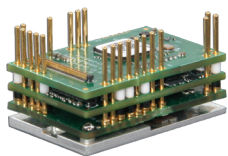


**FlexPro®**



Introducing our...

**Smallest,**

**Most Versatile,**

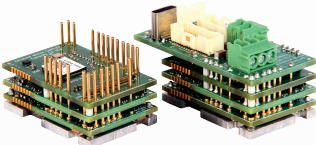
**Most Advanced,**

**...Servo Drives to date!**

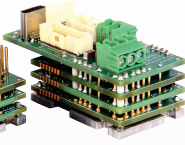
UK & Ireland Distributor

## Growing doesn't always mean getting bigger.

We're in a new era of motion control where advancements in robots and automation are accelerating at a rapid pace. There is a growing demand for smaller, more versatile, and higher power servo drives that are designed to easily integrate into ever-tightening constraints. We therefore introduce our new family of servo drives, FlexPro®.



PCB Mount



Machine Embedded



Panel Mount

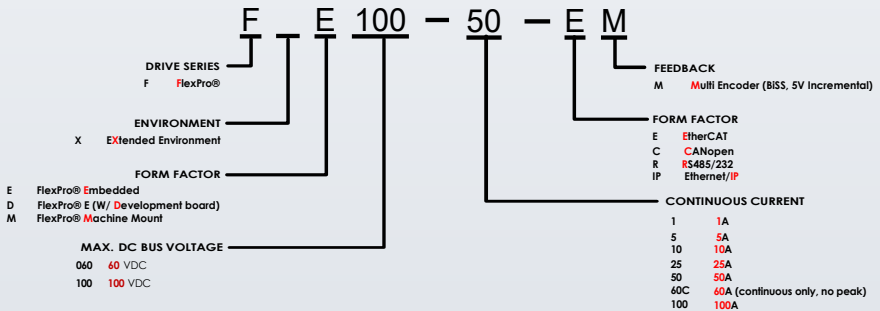


Development Board

## General Specifications

Input Voltage	10 - 55 VDC or 18 - 90 VDC
Peak Output Current	2A / 10 A / 20 A / 50 A / - / 100A / 200A
Continuous Output Current	1A <sub>rms</sub> / 5 A <sub>rms</sub> / 10 A <sub>rms</sub> / 25A <sub>rms</sub> / 60A <sub>rms</sub> / 50A <sub>rms</sub> / 100A <sub>rms</sub>
Network Communication	RS485 / 232, EtherCAT or CANopen, Ethernet/IP
Feedback Supported	BiSS C-Mode/ EnDat® 2.2 / Halls / Incremental Encoder / Tachometer (±10 VDC)
Dimensions in mm	Please refer to individual model's datasheet

## Part Numbering



Ask about...

Other Ethernet fieldbuses

Additional Absolute Feedback  
(Tamagawa, SSI)

Higher power levels

Building block for modifications and  
complete custom solutions

Perfect for...

Cobots, Warehouse Robots & AGVs

Portable/Mobile Devices

Integrated Designs

Lab Automation

...And endless others!

**ADVANCED**  
MOTION CONTROLS  
Everything's Possible.

UK & Ireland Official Distributor  
MOTION CONTROL PRODUCTS LTD.  
11-15 Francis Ave., Bournemouth, Dorset, UK BH11 8NX

Tel.: (+44) 01202 599922  
E-mail: enquiries@motioncontrolproducts.com  
W: www.motioncontrolproducts.com