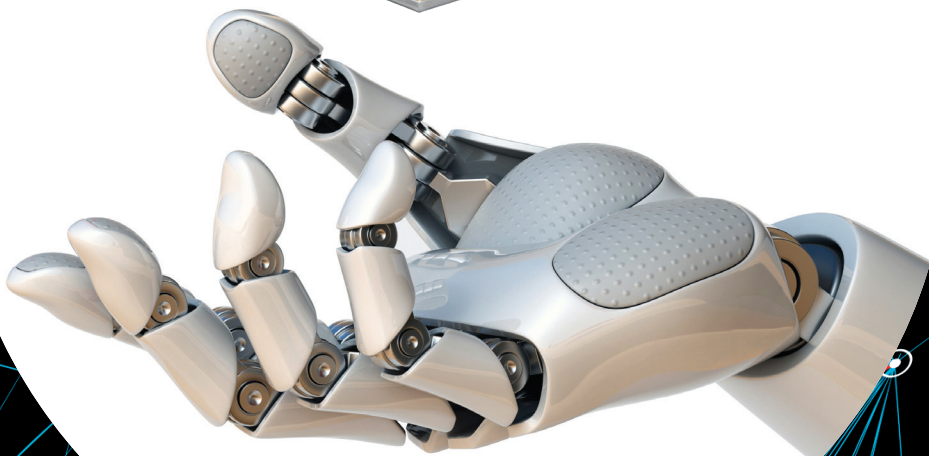
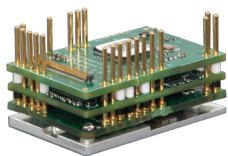


**FlexPro<sup>®</sup>**



Introducing our...

**Smallest,**

**Most Versatile,**

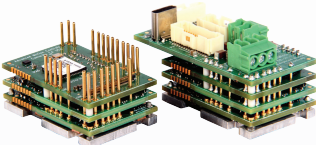
**Most Advanced,**

**...Servo Drives to date!**

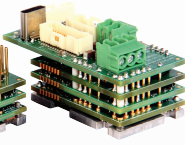
UK & Ireland Distributor

## Growing doesn't always mean getting bigger.

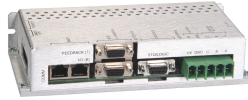
We're in a new era of motion control where advancements in robots and automation are accelerating at a rapid pace. There is a growing demand for smaller, more versatile, and higher power servo drives that are designed to easily integrate into ever-tightening constraints. We therefore introduce our new family of servo drives, FlexPro®.



PCB Mount



Machine Embedded



Panel Mount

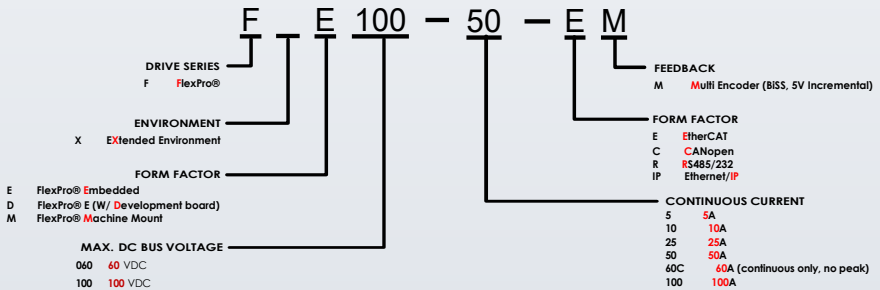


Development Board

## General Specifications

Input Voltage	10 - 55 VDC or 20 - 90 VDC
Peak Output Current	10 A / 20 A / 50 A / - / 100A
Continuous Output Current	5 Arms / 10 Arms / 25Arms / 60Arms / 50Arms
Network Communication	RS485 / 232, EtherCAT or CANopen, Ethernet/IP
Feedback Supported	BiSS C-Mode, Incremental Encoder
Dimensions in mm (PCB / Mount)	38 x 25 x 16 / 38 x 25 x 12 <small>(For other models, please refer to individual datasheet)</small>

## Part Numbering



Perfect for...

**Cobots**

**Warehouse Robots and AGVs**

**Portable/Mobile Devices**

**Integrated Designs**

**Lab Automation**

...And endless others!

Ask about...

**Other Ethernet fieldbuses**

**Additional Absolute Feedback (Tamagawa, SSI)**

**Higher power levels**

**Building block for modifications and complete custom solutions**

**ADVANCED**  
**MOTION CONTROLS**  
Everything's Possible.

**UK & Ireland Official Distributor**  
**MOTION CONTROL PRODUCTS LTD.**  
11-15 Francis Ave., Bournemouth, Dorset, UK BH11 8NX

Tel.: (+44) 01202 599922  
E-mail: enquiries@motioncontrolproducts.com  
W: www.motioncontrolproducts.com