

**Leadshine**

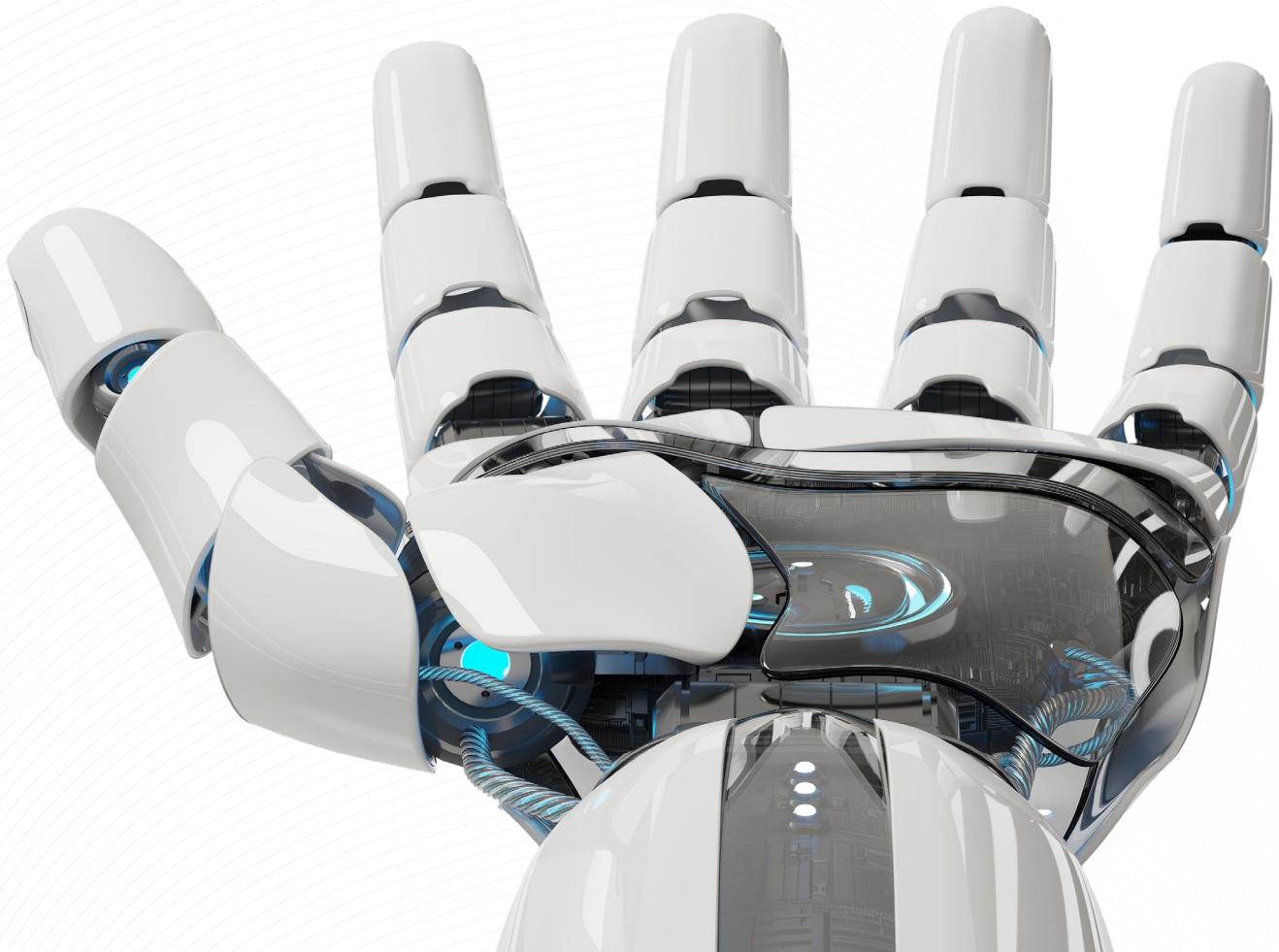
Stock Code: 002979

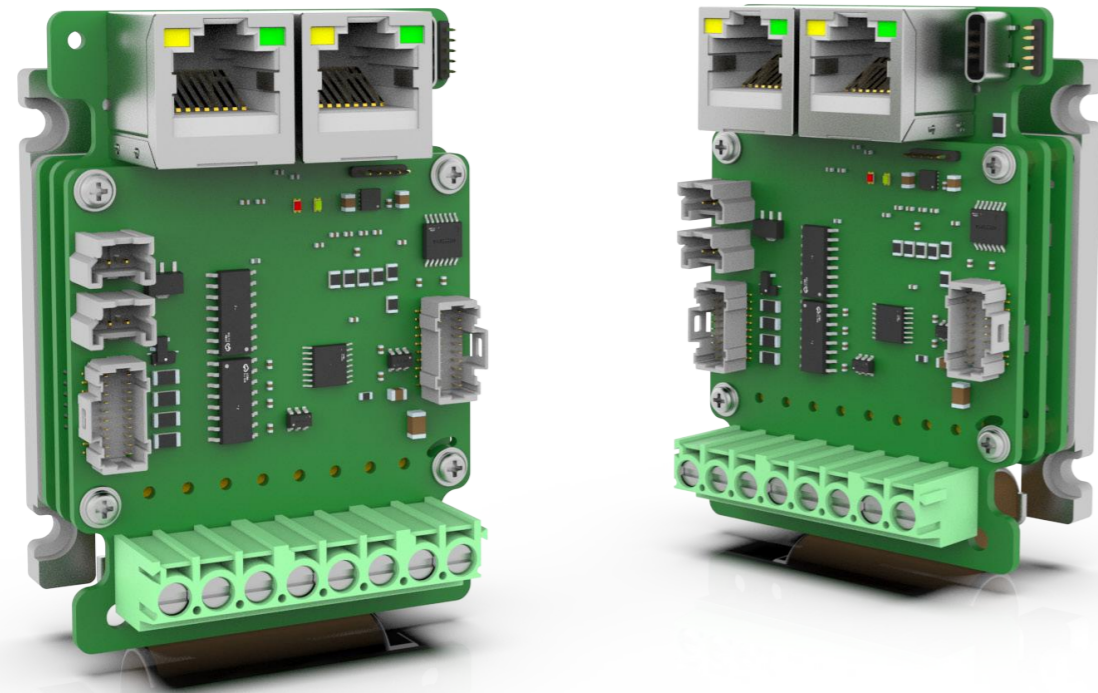
UK & Ireland Official Distributor



# ELD3 Series

# Miniature DC Servo Drives



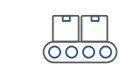


Mini DC Servo Drive

## ELD3 Series

ELD3 Series Mini DC Servo Drive is the latest DC servo drive launched to an ever progressively improving Leadshine DC servo drive product lines. A whole new line of servo products featuring compact full functional smaller drive than the size of the palm with power ratings ranging from 50W up to 750W.

Our ELD3 Series supports EtherCAT communication protocol with many others to be released soon. The series come with Safe Torque Off, Logic Power Circuit, Brake Output, Full Closed Loop Control among many other servo functions that are not available on previous generation drives.



AGV & Logistics



Medical



Semiconductor



Electronics

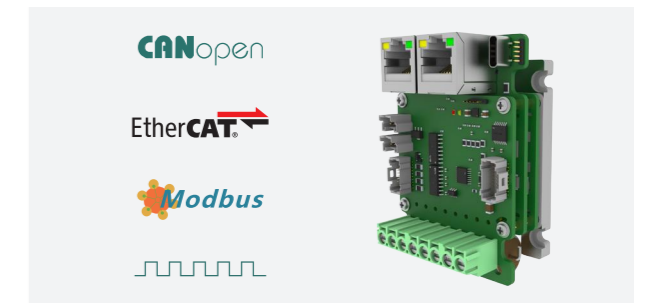


Robots

### Overview

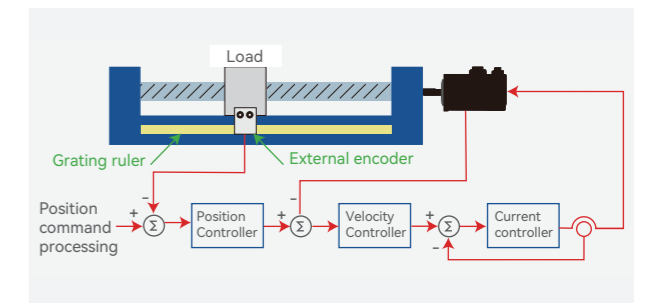
#### Supports various protocols

ELD3 series servo drives can be controlled using **EtherCAT, CANopen and Modbus RTU** communication protocol. Besides that, pulse and analogue control are available as well. Our ELD3 can also be applied in controlling of **linear motors**.



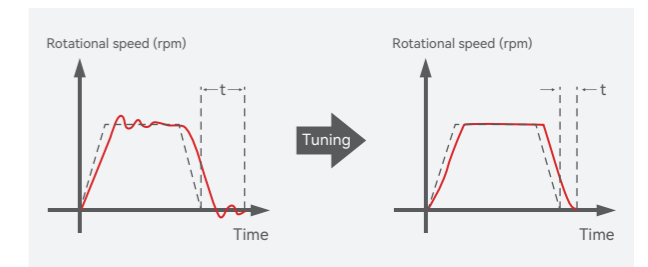
#### Full closed loop control

ELD3 series servo drives support full closed loop control which can eliminate the position deviation due to mechanical gap, and precision will have an obvious improvement.



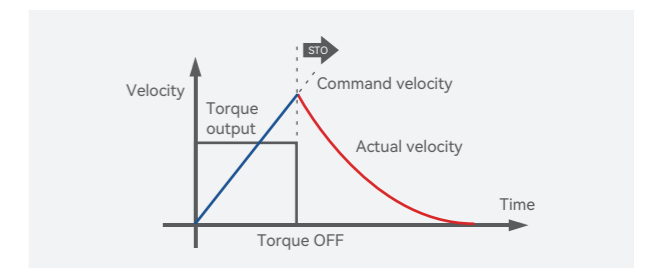
#### Easy tuning

Follow a few simple steps to get servo tuning done. Tested and proven to be easy to use and effective.



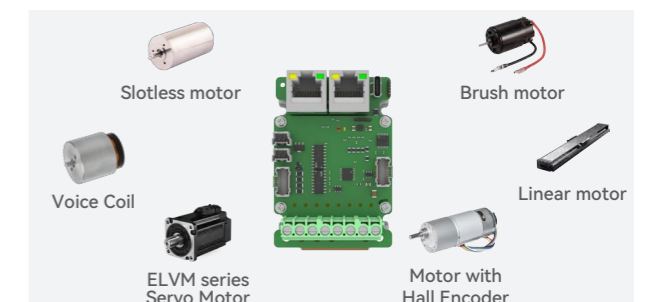
#### Safe Torque Off

When Safe Torque Off is activated, internal circuit will cut off motor power supply immediately, guaranteeing operator and machine safety.



#### Can be matched to many types of motors

Slotless Motor, ELVM Series DC Servo Motor, Brush Motor, Motor with Hall Encoder, Voice Coil.



## Part Numbers

### ELD3 - EC 70 05 B M

Drive Series	
ELD3	ELD3 Series Mini Servo Drive

Communication Protocol	
CAN	CANopen
EC	EtherCAT
RS	Modbus RTU/Analogue/Pulse

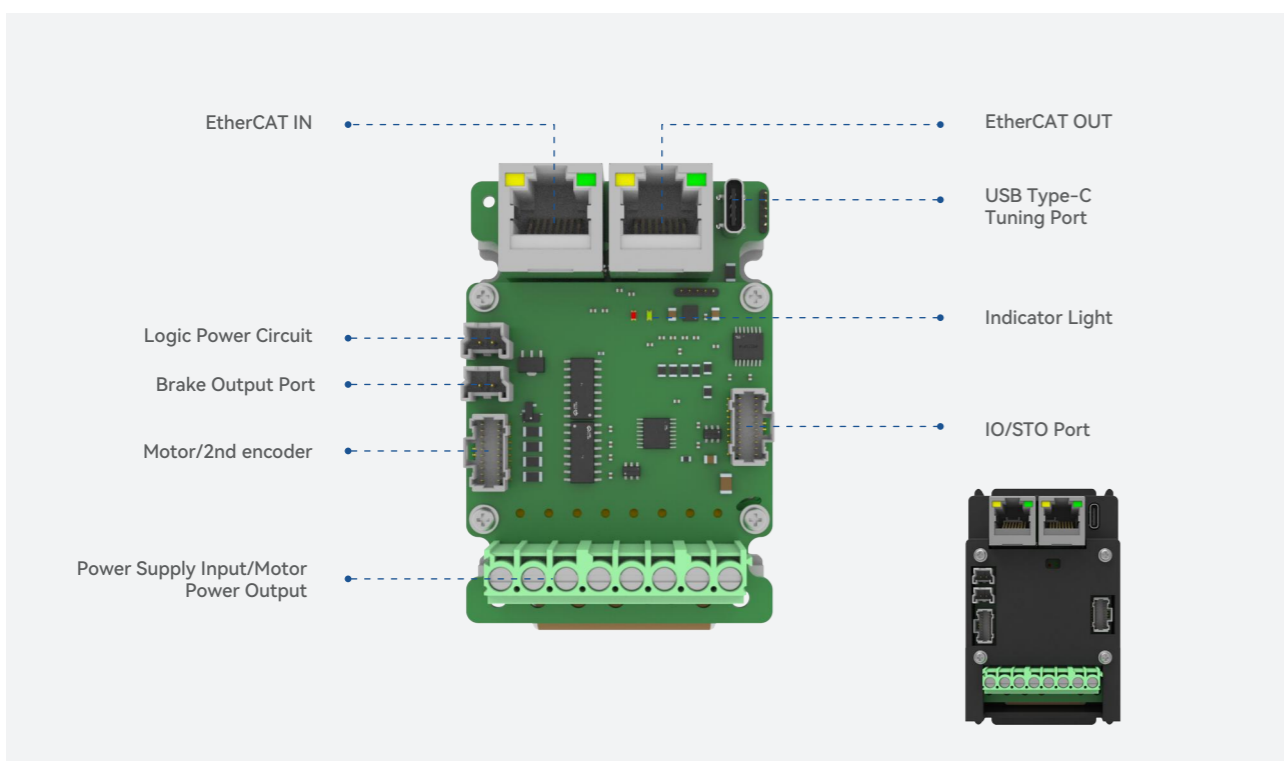
Rated Voltage	
70	24-70VDC

Housing	
M	Without Housing
H	With Housing

Brake	
B	With Brake Output

Rated Current			
01	01Arms	10	10Arms
05	05Arms	20	20Arms

## Ports & Connectors



## Specifications

ELD3 Series	ELD3-CAN7001BM ELD3-EC7001BM ELD3-RS7001BM	ELD3-CAN7005BM ELD3-EC7005BM ELD3-RS7005BM	ELD3-CAN7010BM ELD3-EC7010BM ELD3-RS7010BM	ELD3-CAN7020BM ELD3-EC7020BM ELD3-RS7020BM
Rated Power(W)	50W	200W	400W	750W
Rated Current (Arms)	1	5	10	20
Peak Current (Arms)	2.5	12.5	25	50
Control Circuit Power Supply	24VDC , -25%~+25%			
Main Power Supply	24-70Vdc			
Cooling	Cooling through metal mount plate			
Dimension H*L*W(mm)	76*50*33.5			
Communication protocol	EtherCAT / CANopen / Modbus RTU / Pulse / Analogue			
Tuning Port	USB Type-C Tuning Port. Can be tuned without connecting to main power supply			
Analogue Input	2 Analogue Input, Input Voltage -10V~+10V, Max. Voltage: ±12V			
Digital Input	6 Digital Inputs (Supports NPN and PNP)			
Digital Output	3 Digital Outputs (3 double-ended)			
2nd Encoder	Hall signal UVW + ABZ or RS485 encoder (Tamagawa protocol) BISS-C			
Communication Port	RJ45 For EtherCAT, CANopen, Modbus RTU port			
Safety Function	Safe Torque Off Logic Power Circuit Brake Output			
Environment	Temperature	Storage: -20-80°C (Condensation free); Installation: 0-55°C (Not frozen)		
	Humidity	Under 90%RH (Condensation free)		
	Altitude	Up to 1000m above sea level		
	Vibration	Less than 0.5G (4.9m/s <sup>2</sup> ) 10-60Hz (non-continuous working)		
	IP ratings	IP20		



**UK Business Partner**



**Headquarters**  
**China Leadshine Technology Co., Ltd.**

☎ +86 755 26411692    📠 +86 755 26402718  
🌐 [www.leadshine.com](http://www.leadshine.com)  
✉ [sales@leadshine.com](mailto:sales@leadshine.com) (Sales)  
    [tech@leadshine.com](mailto:tech@leadshine.com) (Technical Support)  
📍 15-20/F, Block B, Nanshan i-Valley, Shuguang Community,  
    Xili Town, Nanshan District, Shenzhen 518055, China

**UK & Ireland Official Distributor**  
**Motion Control Products Ltd.**

☎ +44 (0)1202 599922  
🌐 [www.motioncontrolproducts.com](http://www.motioncontrolproducts.com)  
✉ [enquiries@motioncontrolproducts.com](mailto:enquiries@motioncontrolproducts.com)  
📍 11-15 Francis Avenue, Bournemouth,  
    Dorset, UK, BH11 8NX